

HOW TO PROTECT YOURSELF FROM MOSQUITO-BORNE DISEASES

To avoid contracting these diseases, people should avoid getting bit by mosquitoes.

- Wear long loose fitting clothing.
- Apply bug repellent (we recommend repellents containing DEET).
- Dump, drain, or cover any standing water around your house.



FOR MORE INFORMATION ABOUT ARBOVIRUSES AND PREVENTION PLEASE VISIT:

Anastasia Mosquito Control District
www.amcdsjc.com

**Centers for Disease Control &
Prevention**
www.cdc.gov

Division of Environmental Health
[www.doh.state.fl.us/environment/
community/arboviral](http://www.doh.state.fl.us/environment/community/arboviral)

**Florida Medical Entomology
Laboratory**
www.mosquito.ifas.ufl.edu

**United States Department of
Agriculture**
www.usda.gov

Anastasia Mosquito Control District
of St. Johns County
120 EOC Drive
St. Augustine, FL 32092
(904) 471-3107
www.amcdsjs.org

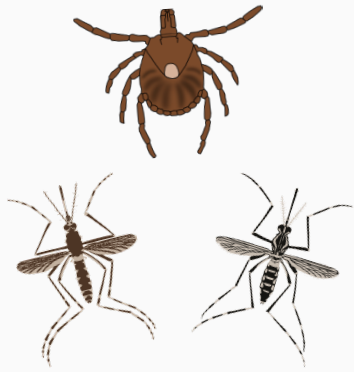


MOSQUITO-BORNE DISEASES AND PREVENTION



WHAT IS AN ARBOVIRUS?

An Arbovirus is a virus that is spread to people by mosquitoes, ticks, or other arthropods.

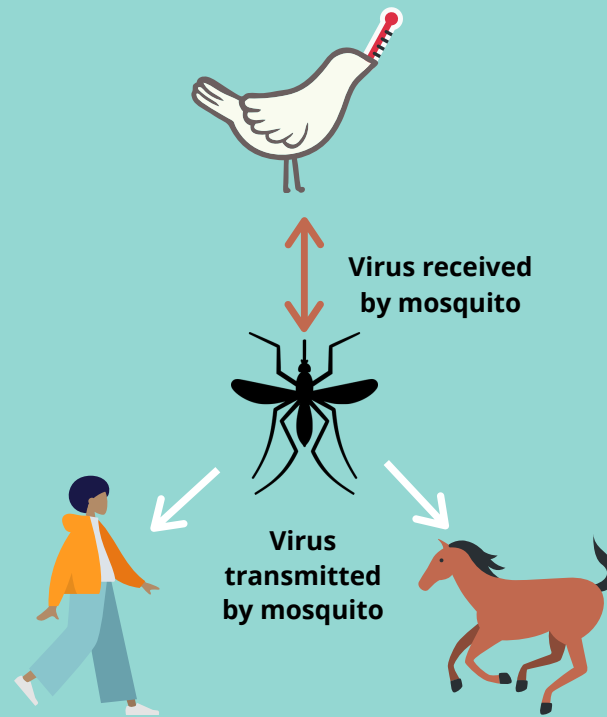


WHAT MOSQUITO-BORNE ARBOVIRUSES CURRENTLY EXIST IN ST. JOHNS COUNTY?

Possible mosquito-borne arboviruses in St. Johns County include, but are not limited to, West Nile Virus (WNV), St. Louis Encephalitis Virus (SLEV), and Eastern Equine Encephalitis Virus (EEEV).

OTHER DISEASES THAT HAVE BEEN TRANSMITTED:

Malaria, Yellow Fever virus, Dengue Fever, Zika virus, and Chikungunya virus.



EASTERN EQUINE ENCEPHALITIS VIRUS

How is EEEV transmitted?

EEEV transmission happens when a mosquito bites a bird infected with EEEV, then that same mosquito bites a human or horse.

How Serious is EEEV?

EEEV is one of the most serious mosquito-borne viruses in the United States because of its high mortality rate. One-third of infected people will die, while half of those who survive will have mild to severe neurological damage. Symptoms can range from mild flu-like symptoms to coma or even death.

WEST NILE VIRUS

How is WNV transmitted?

WNV transmission happens when a mosquito bites a bird infected with WNV, then that same mosquito bites a human, horse, or other animal.

How serious is WNV?

1 in 150 people with WNV will develop severe illness, while some will have minor symptoms. Approximately eighty percent (80%) of infected people will not show symptoms at all. Symptoms may include high fever, headache, neck stiffness, stupor, disorientation, coma, tremors, convulsion, muscle weakness, vision loss, numbness, or paralysis.



ARE THERE
VACCINES

AVAILABLE FOR
EEEV OR WNV?

Unfortunately, there are no EEEV or WNV vaccines for humans; however, there are vaccines available for horses.